



WESTWOODLEBER

WESTWOODLEBER
LET US GUIDE YOU HOME

Station Road, Ware, SG12 9PU
£325,000



Station Road, Ware, SG12 9PU

Westwood Leber are delighted to present this larger than average two bedroom apartment, ideally situated in the heart of Ware town centre. Located on the second floor, this spacious home offers well balanced accommodation throughout and benefits from an extended lease for added peace of mind.

The property has been completely refurbished by the current owners to a high standard, featuring modern finishes throughout including stylish, on-trend internal doors and contemporary design touches that enhance the overall feel of the home. Further benefits include a high-specification refitted kitchen, two modern bathrooms, and versatile reception area, providing excellent space for both living and entertaining.

Externally, the property benefits from allocated residents parking, securely accessed via electric gates. Millacres is perfectly positioned just moments from Ware's vibrant high street, with its range of shops, restaurants, and amenities, as well as the mainline train station offering convenient links to Hertford East and London Liverpool Street.

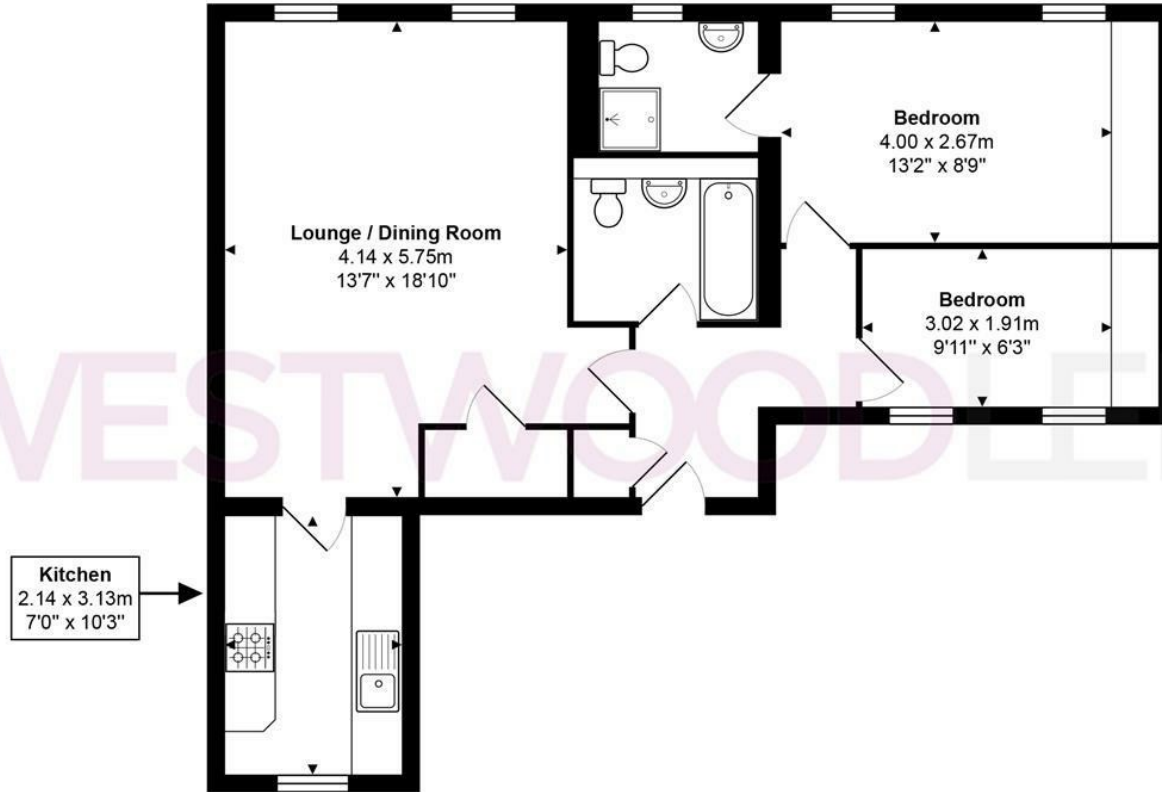
An excellent opportunity for both buyers and investors alike, early viewing is highly recommended.



W WESTWOODLEBER

W WESTWOODLEBER
LET US GUIDE YOU HOME

WL WESTWOODLEBER



Total Area: approx. 66.9 m² ... 720 ft²

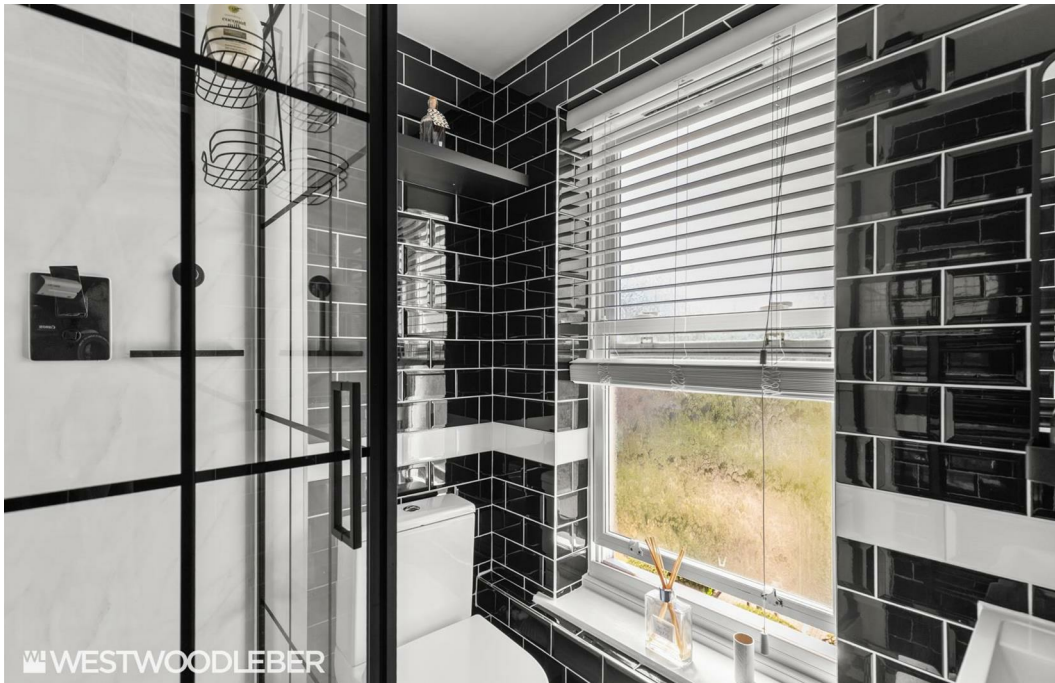
THE FLOORPLAN IS FOR ILLUSTRATIVE PURPOSES ONLY AND IS NOT TO SCALE.

Measurements and features are approximate and may differ from the actual property. Verify all details independently; no liability is accepted for errors or omissions.

Property marketing provided by www.fotomarketing.co.uk











WESTWOODLEBER

WESTWOODLEBER
LET US GUIDE YOU HOME